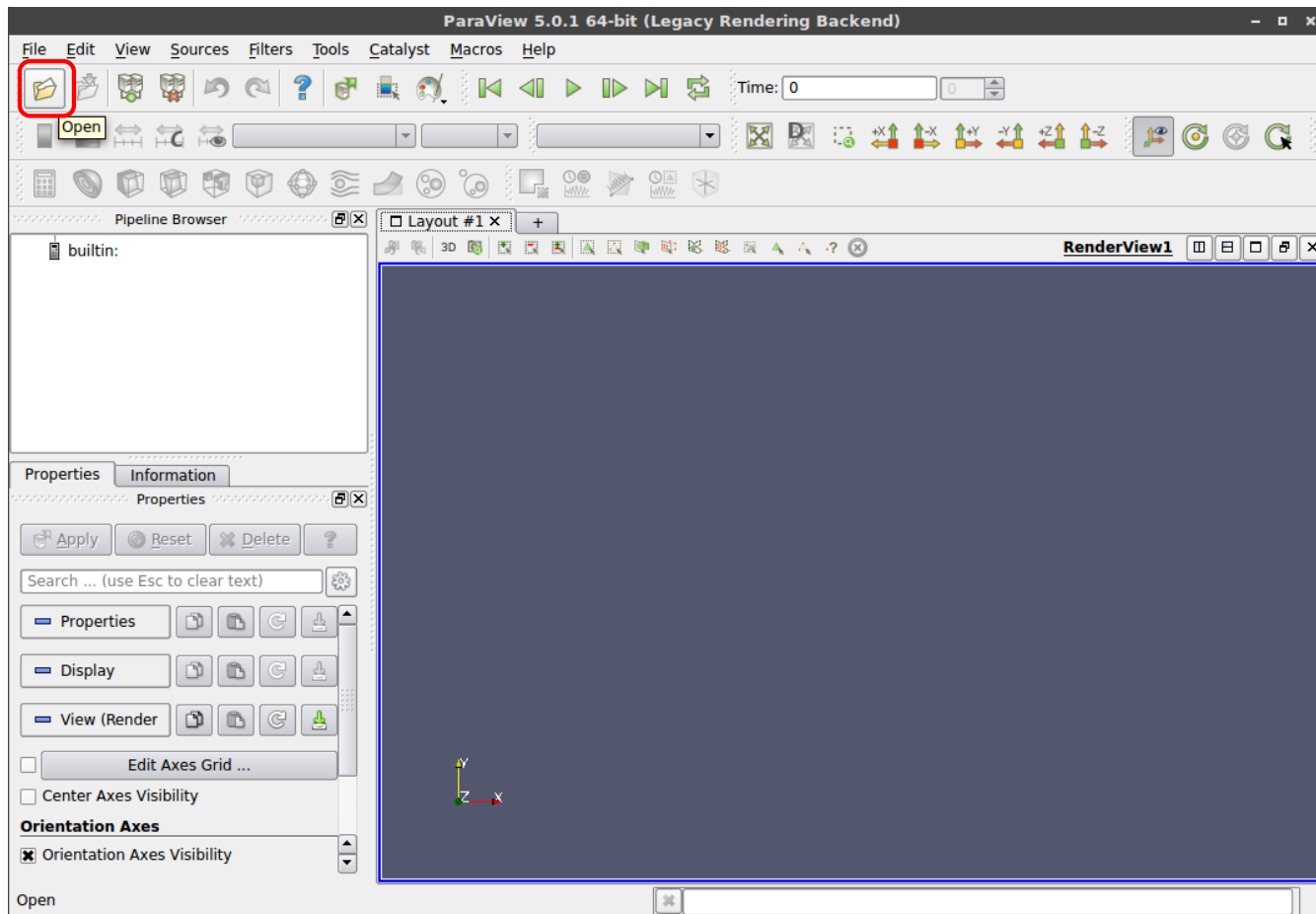


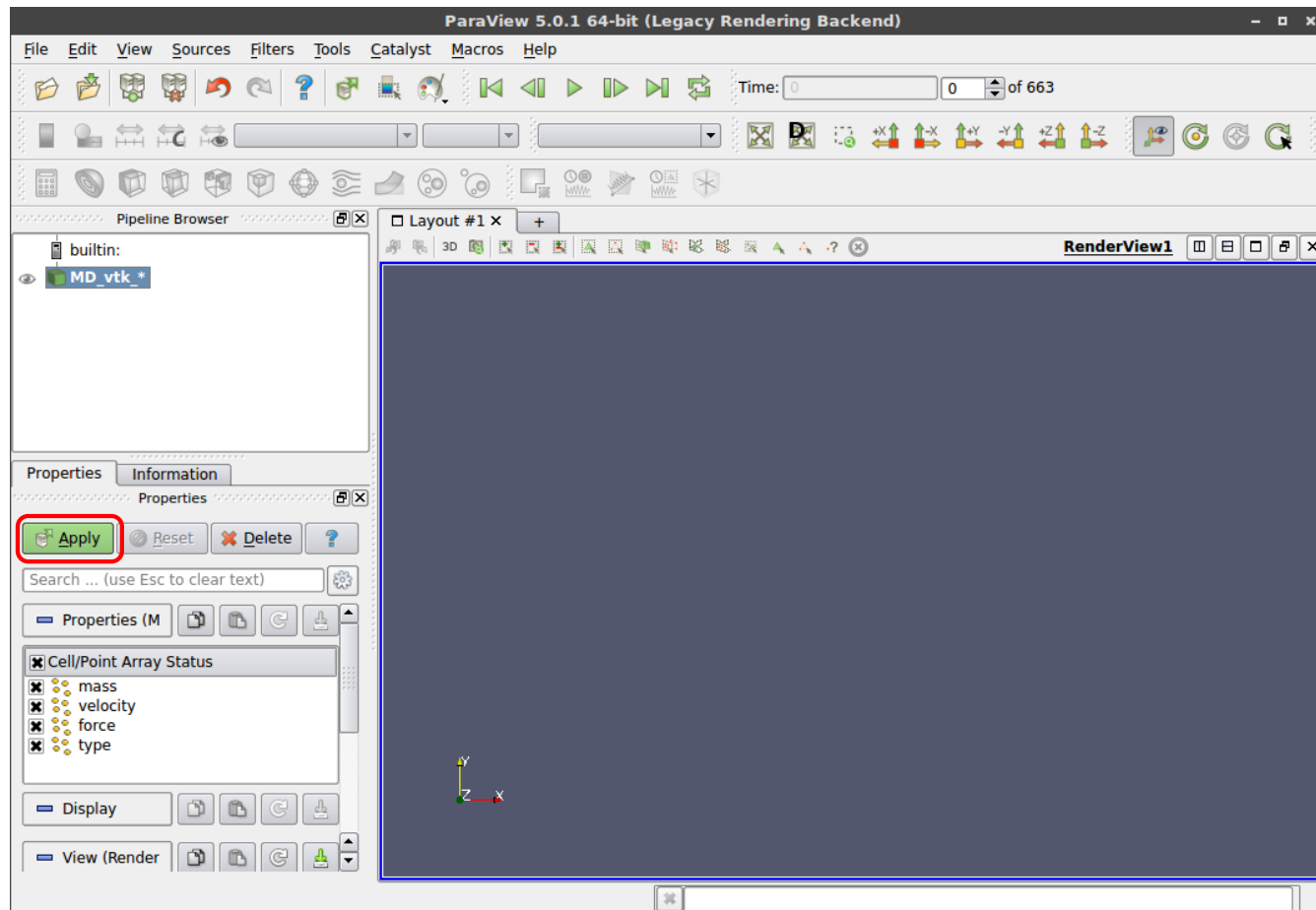
# Paraview - Convincing shy data to show itself

- Import your data (all files at once)



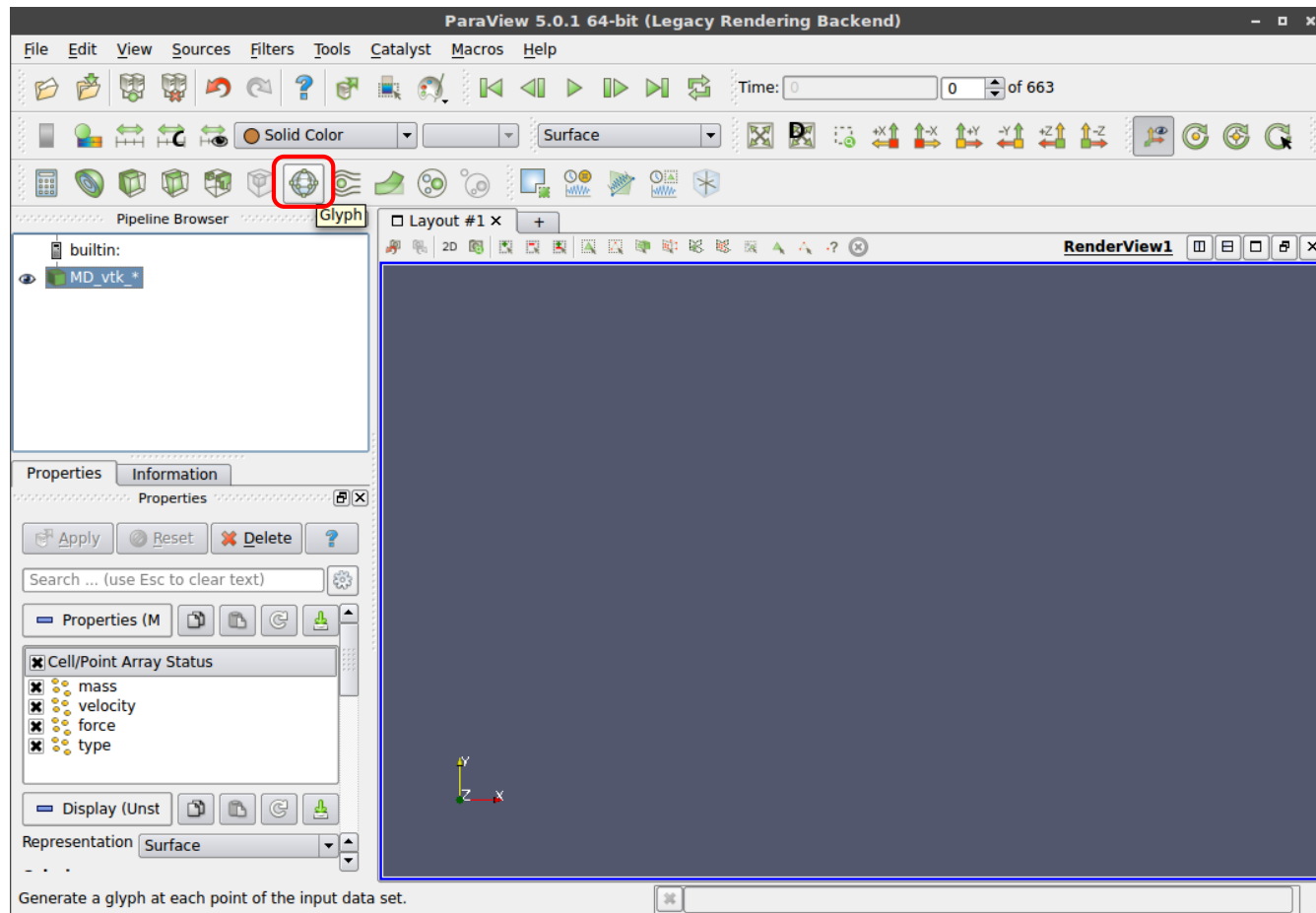
# Paraview - Convincing shy data to show itself

- Hit Apply!



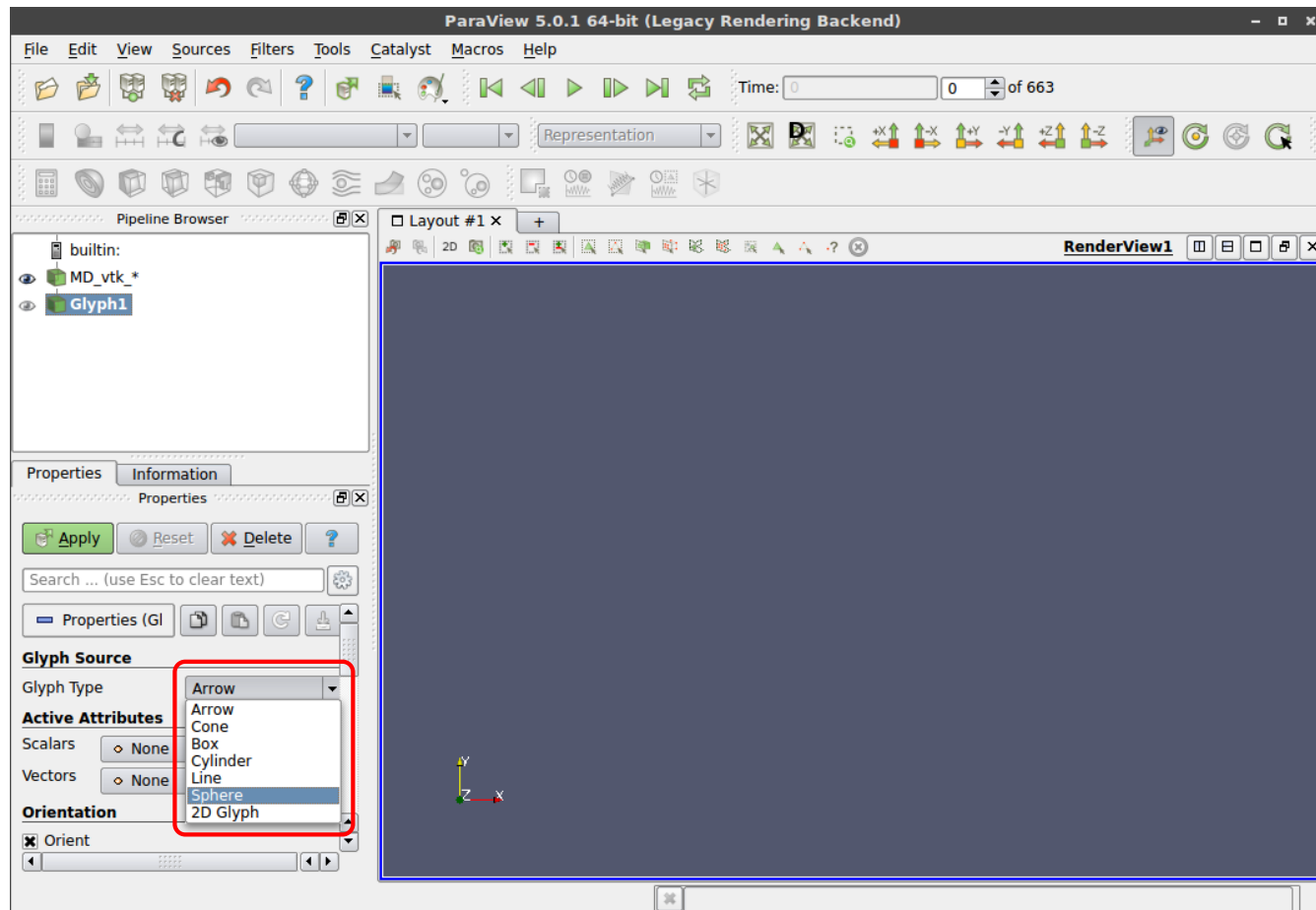
# Paraview - Convincing shy data to show itself

- Create a Glyph filter



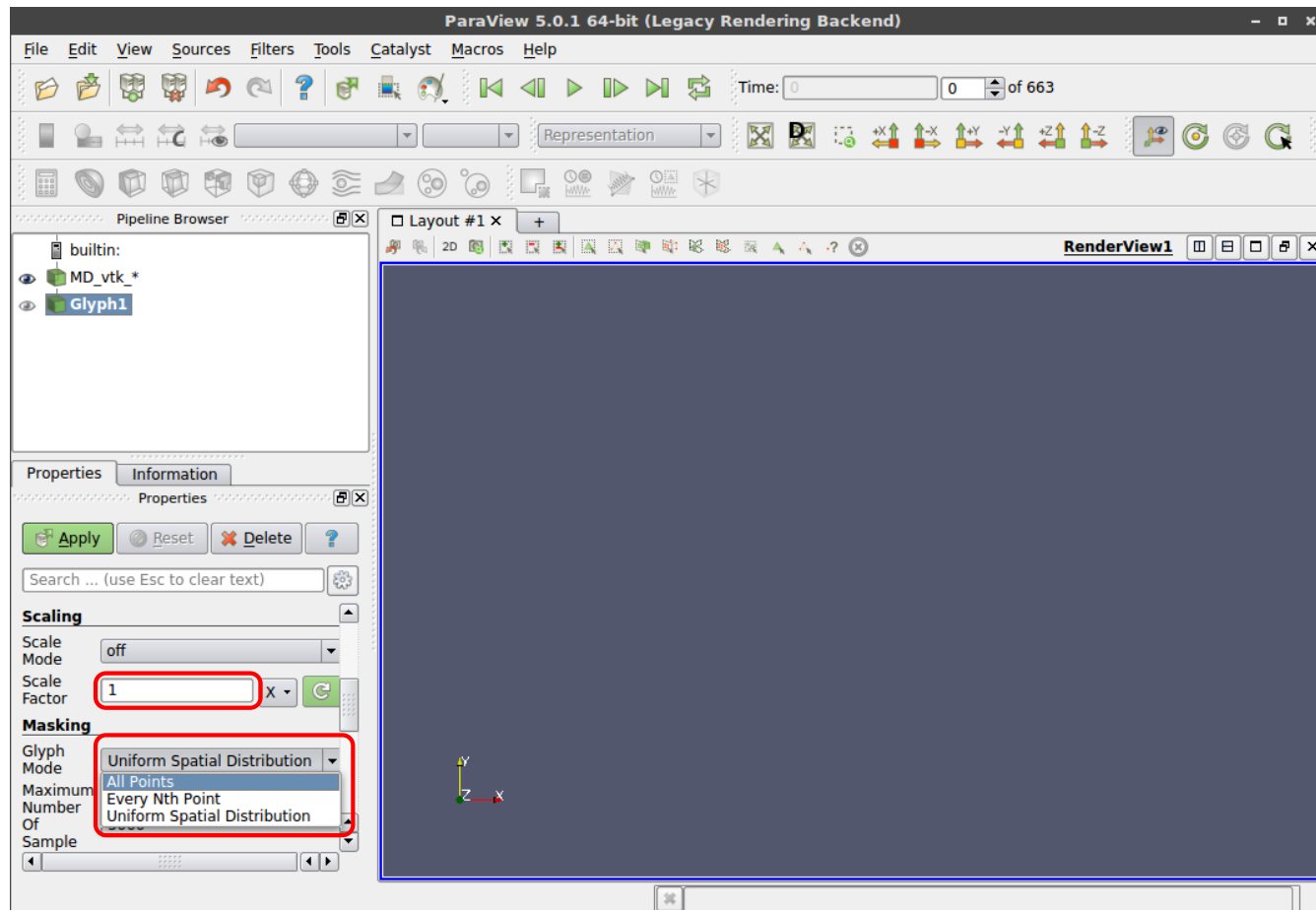
# Paraview - Convincing shy data to show itself

- Select Glyph Type Sphere



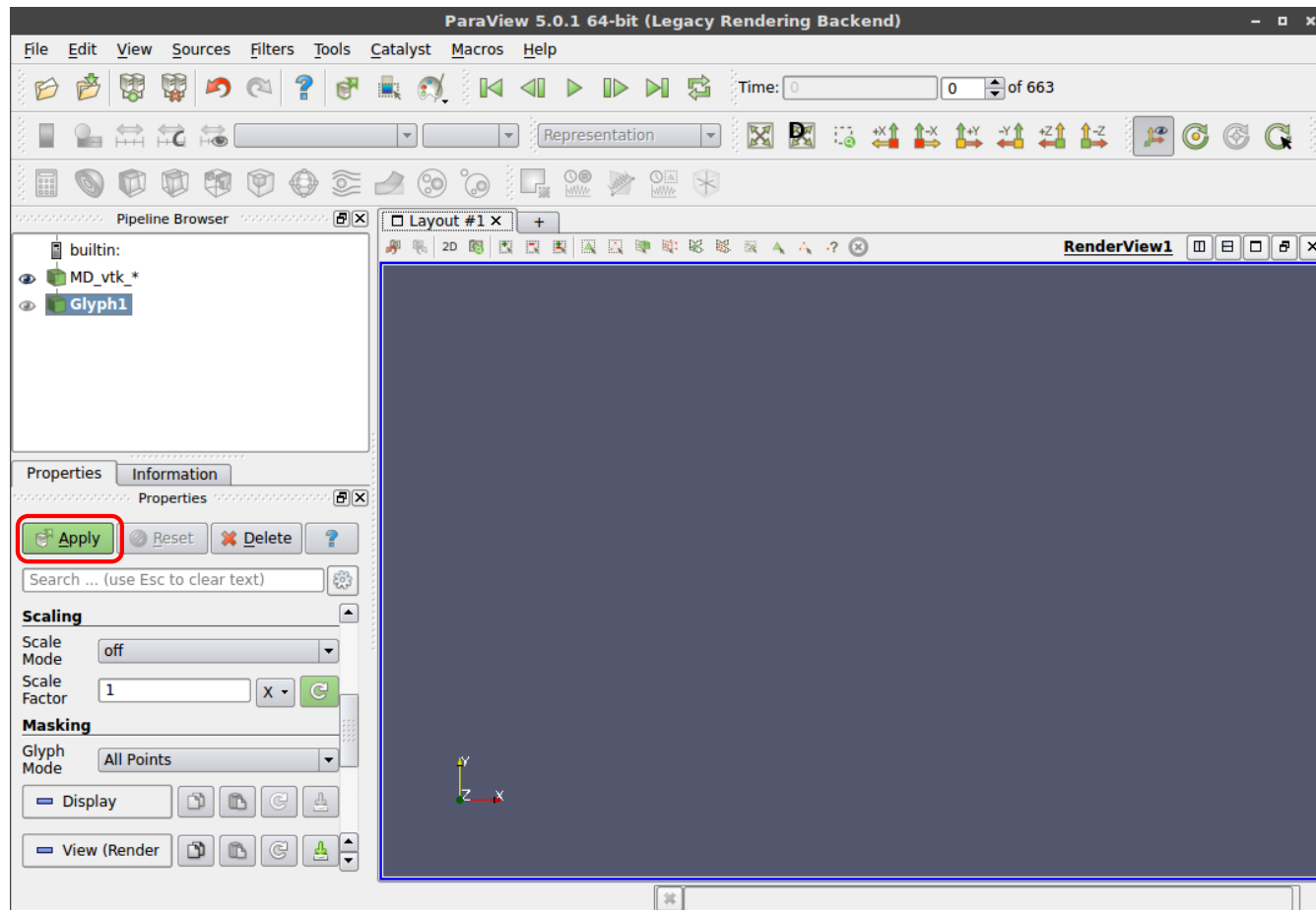
# Paraview - Convincing shy data to show itself

- Choose a sensible scaling and disable masking



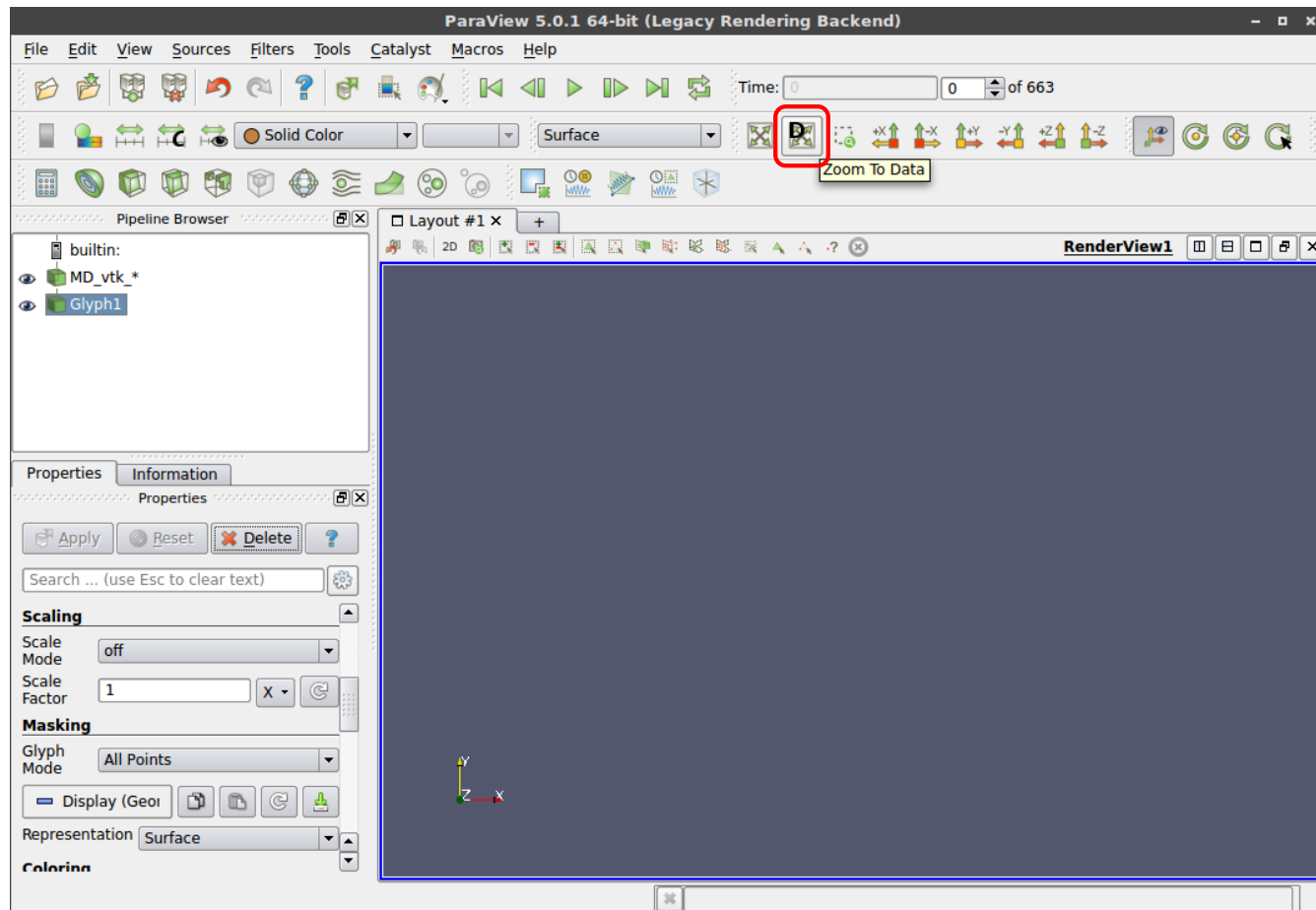
# Paraview - Convincing shy data to show itself

- Hit Apply!



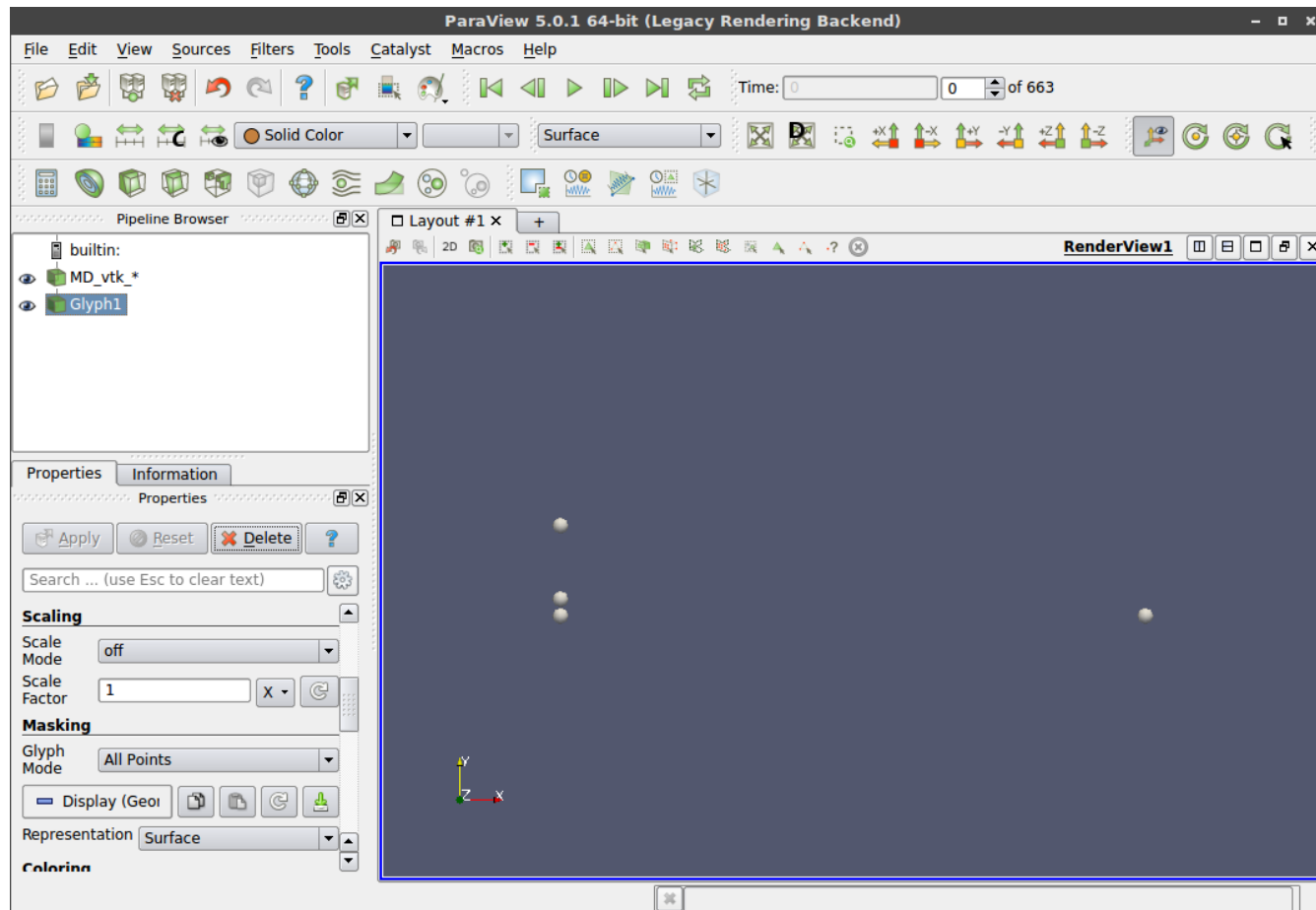
# Paraview - Convincing shy data to show itself

- Center the camera on the data



# Paraview - Convincing shy data to show itself

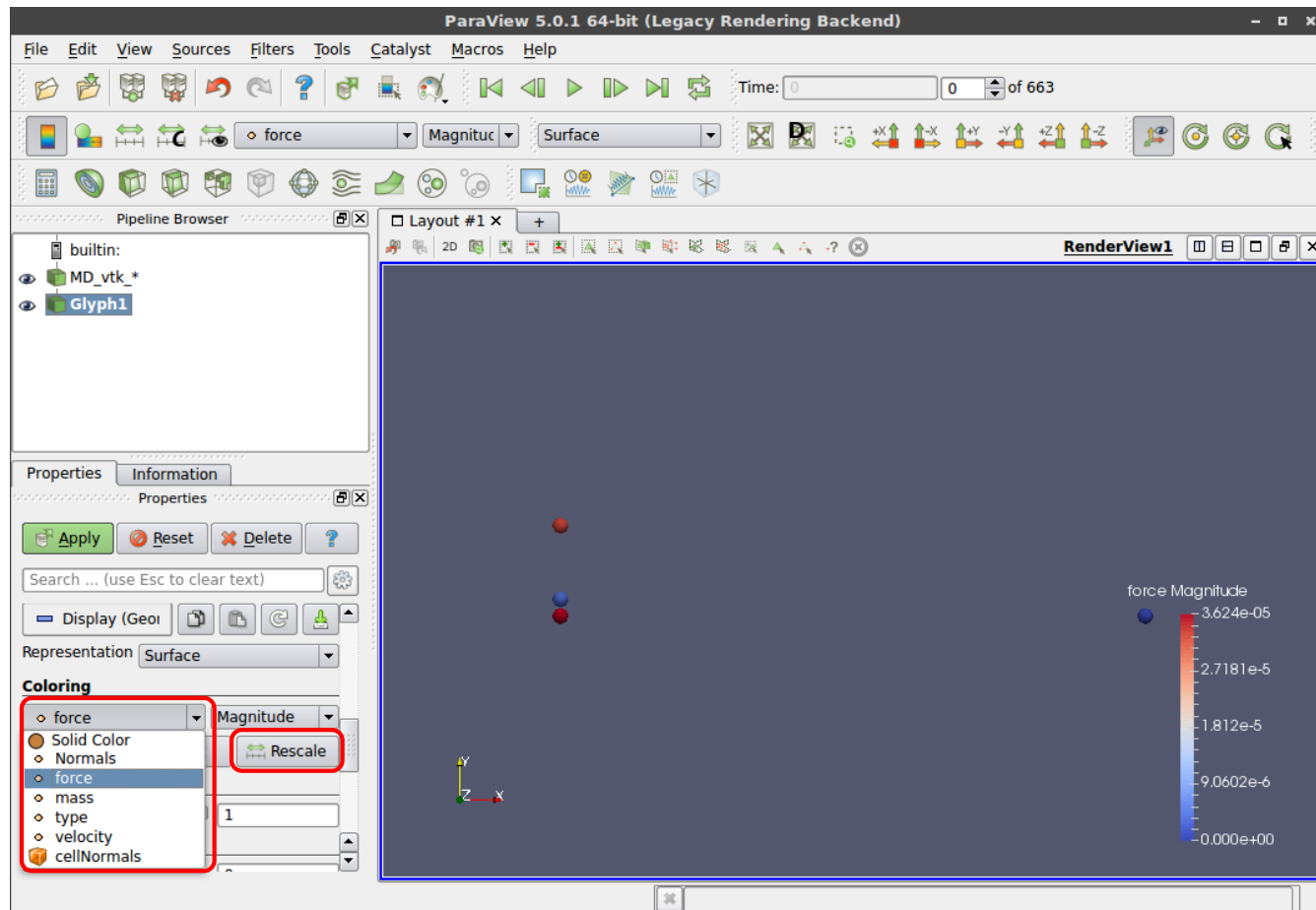
- There they are!





# Paraview - Convincing shy data to show itself

- Choose cooler colors and adjust the color scale



# Paraview - Convincing shy data to show itself

- Rescale color range over all time steps

