

A Collection of Publicly Available Event Logs Enhanced by Metadata

Ana Costa, Selin Y. Eroglu, Kerstin Andree, and Luise Pufahl

Introduction

Access to suitable event logs is critical for research artifact development and evaluation. However, the current landscape of publicly available data lacks in metadata. This poses a challenge for researchers to identify relevant event logs for their research objectives.



Possible Usage and Outlook

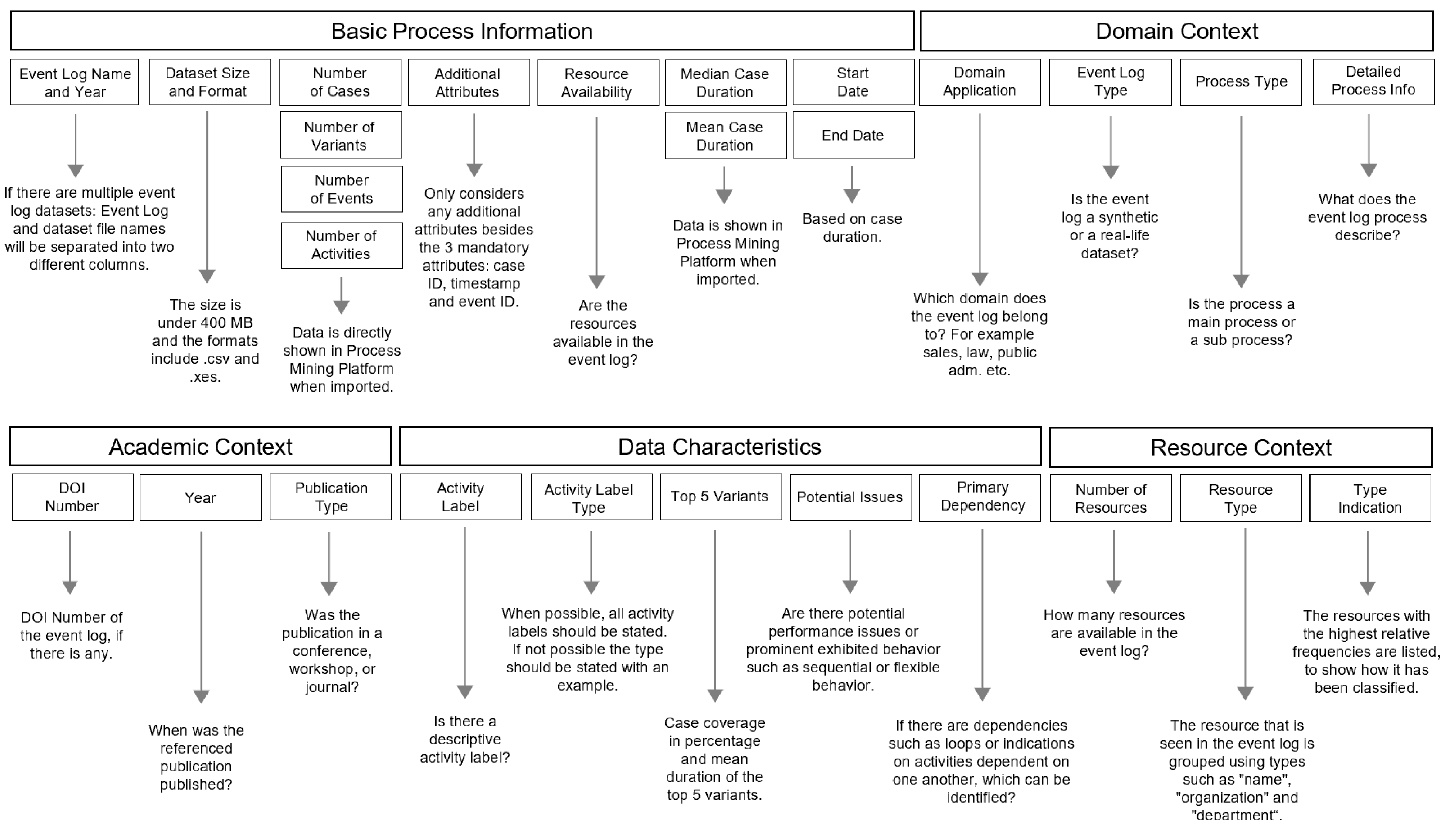
The possibility of filtering logs based on domains or data features accelerates the search process, supports reproducibility, and ensures efficient selection of logs for research.

By categorizing the event logs according to key characteristics, the metadata structure offers a clear overview that facilitates informed dataset selection.

Check out the resource on Zenodo!



Description of the Resource



Preliminary Analysis

Use Case: Process Discovery and Feature Extraction

Discovery of relevant features of decision tasks in processes. The research team aimed to analyze specific attributes of activities that contribute to or precede particular decisions.

Requirements of process discovery use case and their coverage in the categorization framework

No.	Requirement	Framework Coverage	Filter
R1.1	Financial Domain	✓	Domain Application = Financial, Banking
R1.2	Decision Logic	×	
R1.3	Documentation Available	✓	Publication Type ≠ N/A

Use Case: Event Log Sampling for Next Activity Prediction

Finding suitable samples of event logs for training a next-step activity prediction model requires foreseeing undesired execution of activities and obtaining a considerable representation of the process.

Requirements of event log sampling for next activity prediction

No.	Requirement	Framework Coverage	Filter
R2.1	Foresee Undesired Execution	✓	Prominent Exhibit Behavior ≠ Sequential, Parallel Behavior
R2.2	Representative Trace Frequency	✓	Number of variants ∈ [100 and 5000]
R2.3	Mean of Numerical Attributes	✓	Mean Case Duration ∈ [100 minutes and 100 hours]



Prof. Dr. Luise Pufahl
Professorship Holder
luise.pufahl@tum.de



Ana Costa, M.Sc., M.Sc.
Doctoral Candidate & Research Associate
a.costa@tum.de



Check out our website!

Check out the license!

